



# COMPANY PROFILE

2024

[www.smf.it](http://www.smf.it)

# PASSION MEETS COMPETENCE SINCE 1984

---

SOCIETÀ METALMECCANICA FRIULANA



# CONTENTS

DEAR READERS	04
SMF GROUP – Company Structure	06
INTRODUCTION – SMF in nutshell	07
TIMELINE – Company Grownig	08
NUMBERS	12
VISION, MISSION & COMPANY VALUES	14
SKILLS	16
PRODUCT AND SERVICES	20
SMF EXTRUSION	22
SMF FINISHING LINES	23
MFK	24
EQUIPMENT REFERENCES	26
REFERENCE CUSTOMERS	27

# DEAR READERS

## HISTORY



His career had already begun in 1967, at the age of 16, after leaving school. 13 years later, one of his former bosses came looking for him to propose a team. Thus, in 1984, the first company was born, consisting of four partners. Amidst ups and downs, from 1997 the company became a family business, with the entry of his sister Ivana, while in 2010 it was the turn of his nephew Manuel.

There has been no shortage of difficult moments, but after the crisis of 2008-2010, the recovery began and is unstoppable. 'I have always invested, changed machinery and expanded the warehouses to keep up with the market.

The world has changed a lot in 40 years: 'A company of our size must be able to count on trusted personnel, who have competence, experience, but also vision and innovative capacity.

**Ezio Darvini**

CHAIRMAN & BOARD MEMBER

A handwritten signature in dark ink that reads "Darvini Ezio".

## STRATEGY

---

Albert Einstein said that 'the measure of intelligence is the ability to change when necessary'. A strategic vision at a time of radical change such as the current one, in which technological innovation is an enabling factor, is a key element. 'Today in the steel market sector, a clear strategic vision is needed because the positioning of a company will be very different from that of the past. With more than 40 years of experience in large industrial groups in the engineering sector, the goal at SMF today is a change in the organisational model in the company. This kind of change is possible because the company has a well-established and complete production chain in-house and offers customers services for modernisation and maintenance activities.

A look at the needs of the markets, the continuous development of 'clean' innovation that respects both the environment and energy, and a corporate evolution that places the enhancement of human resources at the forefront are and will remain the company's cornerstones.



**Loris Maestrutti**

CEO & BOARD MEMBER

A handwritten signature in black ink, appearing to read 'Loris Maestrutti'.

## DEVELOPMENT

---

He graduated from the Malignani industrial technical institute in Udine and graduated with a master's degree in mechanical engineering from the University of Friuli. In 2010, the choice was to join the family business, despite the severe market crisis of that period. From the penalisation of those years, however, the company emerges stronger. Starting in 2011, turnover began to increase exponentially: from 4 million in 2010 to over 20 million in 2023. The company realises all its plants in-house, meticulously following every step. In recent years, a complete production reality has thus emerged at the service of large companies. 'After 14 years in the company, my role has changed: it is important to plan for the future and to have a strategic vision. For the future of the company, but not only.

With our commitment we support almost 100 families and this is a great responsibility.



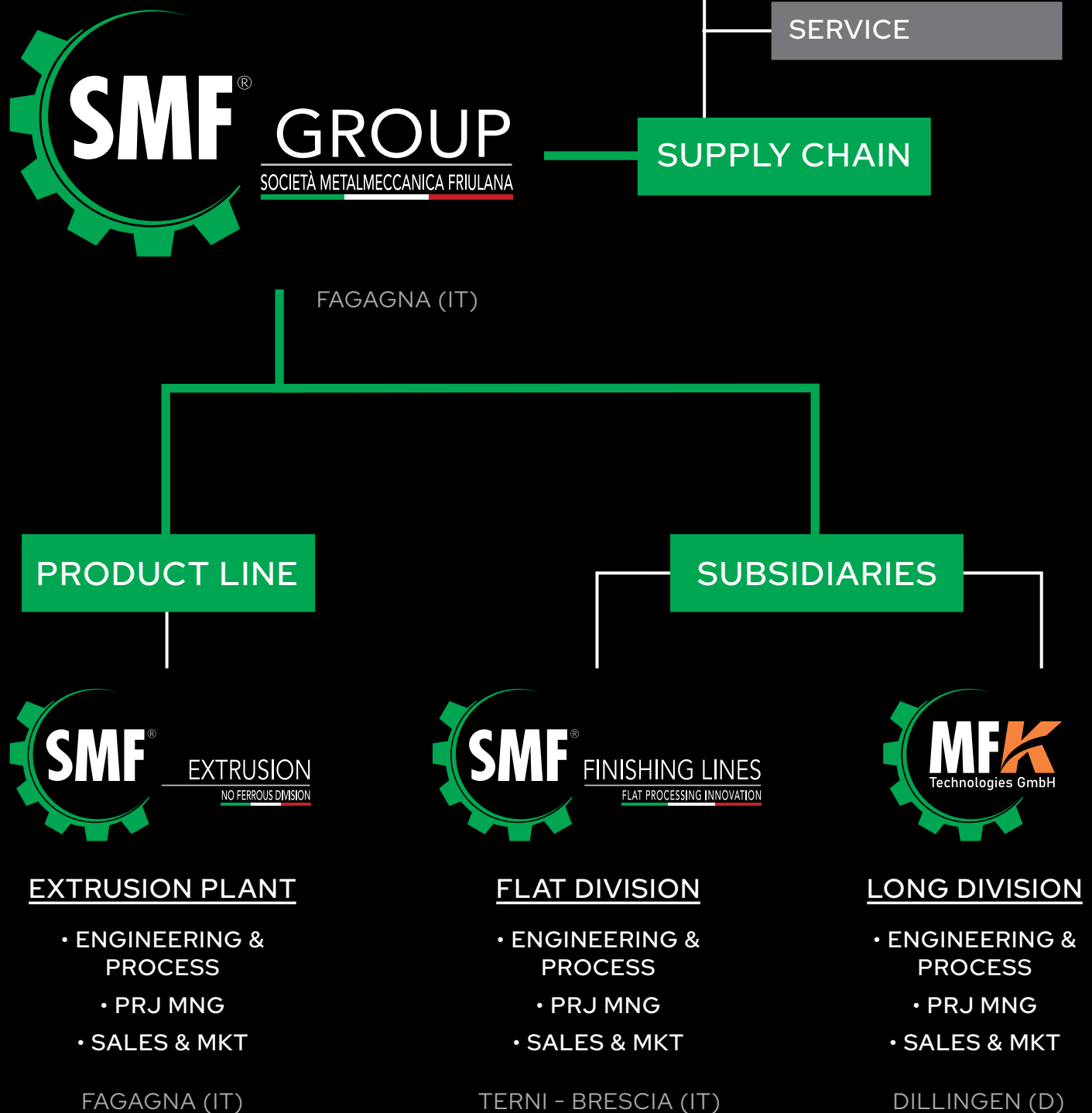
**Manuel Di Biaggio**

COO & BOARD MEMBER

A handwritten signature in black ink, appearing to read 'Manuel Di Biaggio'.

# SMF GROUP

## COMPANY STRUCTURE





# INTRODUCTION

## SMF IN A NUTSHELL

Our company, located near Udine, employs over 80 direct collaborators with a constantly growing annual turnover. SMF designs and supplies equipment and services for the steel industry. The family-run company is now structured with a management with experience in the sector of design and construction of machines for the production of ferrous and non-ferrous materials.

Being mainly a manufacturing company located in a strategic position for plant engineering know-how, many national and international operators use machines built in our workshops and also marketed under other brands in their factories.

Combined with production capacity, the element that distinguishes and completes us is the timely customer assistance activity through survey services, modernization of existing machines and technological areas and spare parts.

Targeted and totally customized engineering completes the work.



# TIMELINE

## COMPANY GROWNING

1971 – 1984

Entrepreneurial growth passes through experiences at **Metalstrutture SpA**, **Comaf SpA** and **Pilosio Spa** with roles of increasing responsibility up to carpentry and machining department manager



1992

Acquisition of the first 1500sqm industrial complex in Fagagna and creation of **SMF1** with carpentry, machining and assembly departments



1969 – 1971

The story begins with **Ezio Darvini** working as an apprentice at **Metalmeccanica Friulana Snc**



1984

Establishment of **Società Metalmeccanica Friulana Srl**, at its first site in Tavagnacco (UD)

1995

Appointment of **Ezio Darvini** as President of the Company





1997

Ms Ivana Darvini joined the company as CFO



2017

Acquisition of the **second industrial division**, also in Fagagna, dedicated to assembly and installation of on-board equipment, **birth of SMF2**

2017

Appointment of Manuel Di Biaggio as COO



2019

Expansion of SMF2 to 5500sqm to include testing department



2020

Acquisition of the **third industrial sector**, also in Fagagna, dedicated to carpentry works, **birth of SMF3**

2023

Appointment of Loris Maestrutti as CEO



2023

Corporate metamorphosis and transformation from a single company to a group



2023

Creation of SMF Finishing Lines Srl in Terni (IT) dedicated to flat-rolled finishing technologies and service activities at plants in central and southern Italy



2023

At the Fagagna site, in addition to being the group's supply chain, special attention is also given to technologies for the production of non-ferrous extruded profiles, creating a dedicated product line with research and development, engineering, sales and production activities.



2024

Creation of the company MFK GmbH in Dillingen (Germany) dedicated to process technology for the production of rolled products and service activities at European customers

# SERVING OUR CUSTOMERS SINCE 1984

---

SOCIETÀ METALMECCANICA FRIULANA



GROUP

SOCIETÀ METALMECCANICA FRIULANA



# NUMBERS

## SMF GROUP

From an artisan company, nearly 40 years of growth in the mechanical and steel industry to ensure expertise and quality services



### 25.000

Square meters of area for production services



### 80

Employees specialized in design, production and commissioning



### 3

Locations dedicated to the production of welded carpentry, CNC machining and assembly



### 60 %

Of production reserved for production as contractors



### 40 %

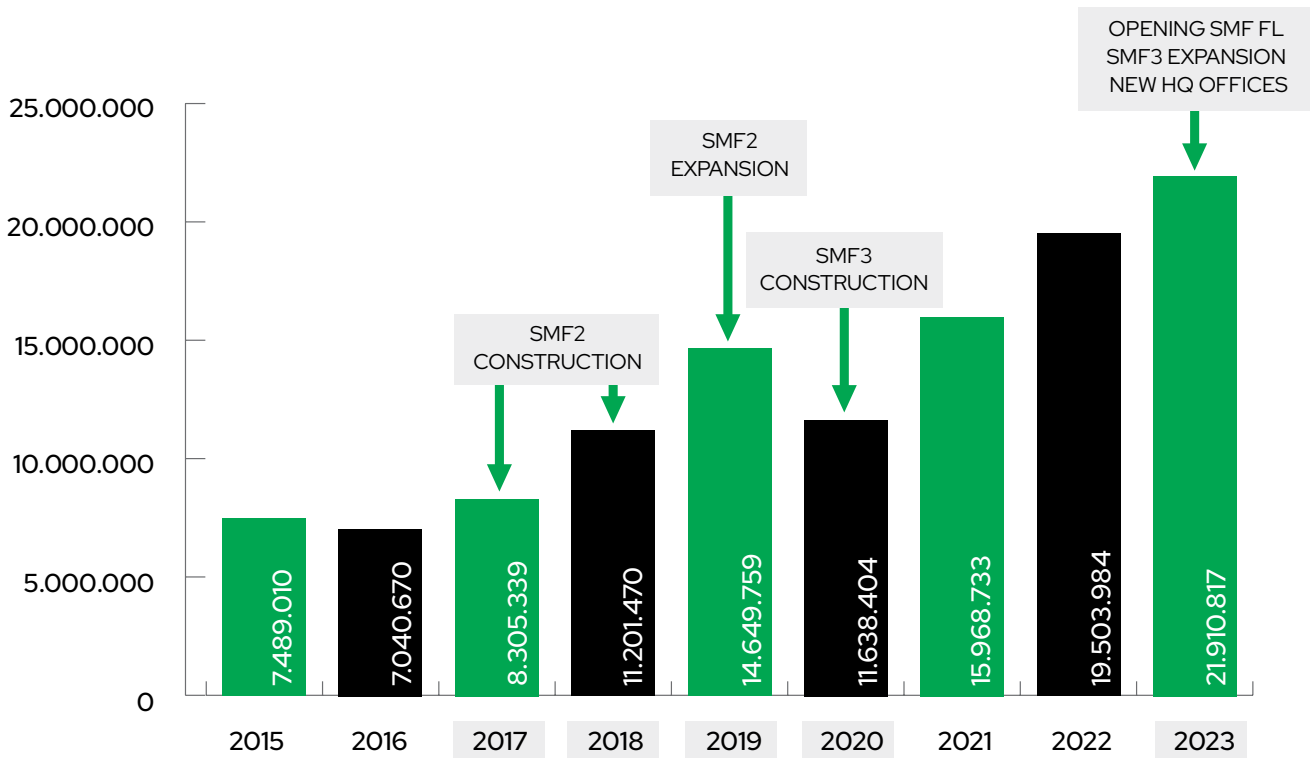
Of production dedicated to technologies with their own KH and engineering



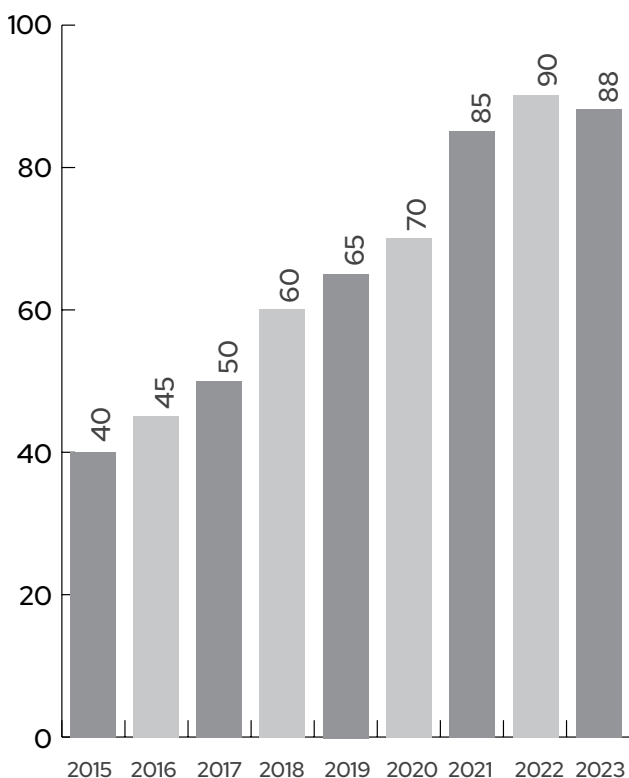


# NUMBERS

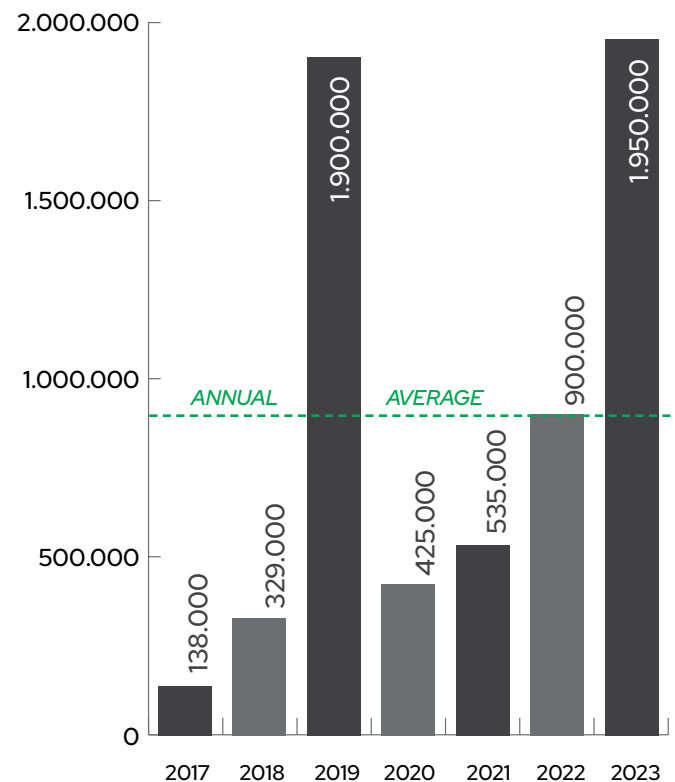
## REVENUES & MILESTONES



## EMPLOYEES



## MAIN INVESTMENT



# VISION, MISSION & COMPANY VALUES

---

## SMF GROUP

### VISION

---

Designing a simple, competitive and sensitive company.

- **SIMPLE:** Equipped with lean processes that ensure efficiency and effectiveness resulting in operational satisfaction for staff.
- **COMPETITIVE:** Able to compete with high standards of quality and customer service.
- **SENSITIVE:** Able to attract and enhance local expertise, anticipating needs with respect to environmental, digital and human transformation



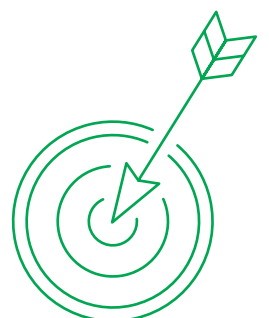
### MISSION

---

Since its foundation, SMF has been a company focused on customer needs.

For 40 years, we have been serving the steel industry by gaining and pouring experience in service, planned and unscheduled maintenance and modification of existing plants with state-of-the-art and fully customised technical solutions.

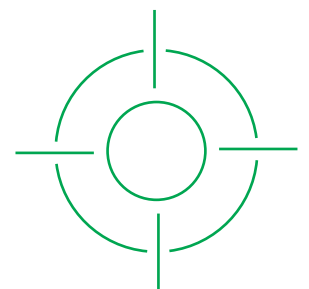
We want to support our customers with a partnership style, proposing effective, quality plant solutions with minimal impact on production downtime and plant stoppages.



## COMPANY VALUES

---

- **STRUCTURE and COMPETENCE:** 25,000 square metres dedicated to the entire supply chain, from the project study phase to final testing and shipment of equipment.
- **PASSION and TEAM SPIRIT:** 80 direct and about 20 indirect employees work in our offices and production sites, with enthusiasm and passion to offer our customers the best quality and service.
- **EFFICIENCY and RELIABILITY:** Direct and transparent approach, with solutions and realizations that respect the needs and timescales of the project.
- **A LOOK AT THE FUTURE:** More than 10% of turnover dedicated to progressive and continuous investment over the years with planning of needs according to objectives.
- **INTERNATIONALISATION and SUSTAINABILITY:** Drive to break out of national schemes or comfort zones to embrace international markets with innovative solutions that respect design and environmental sustainability.



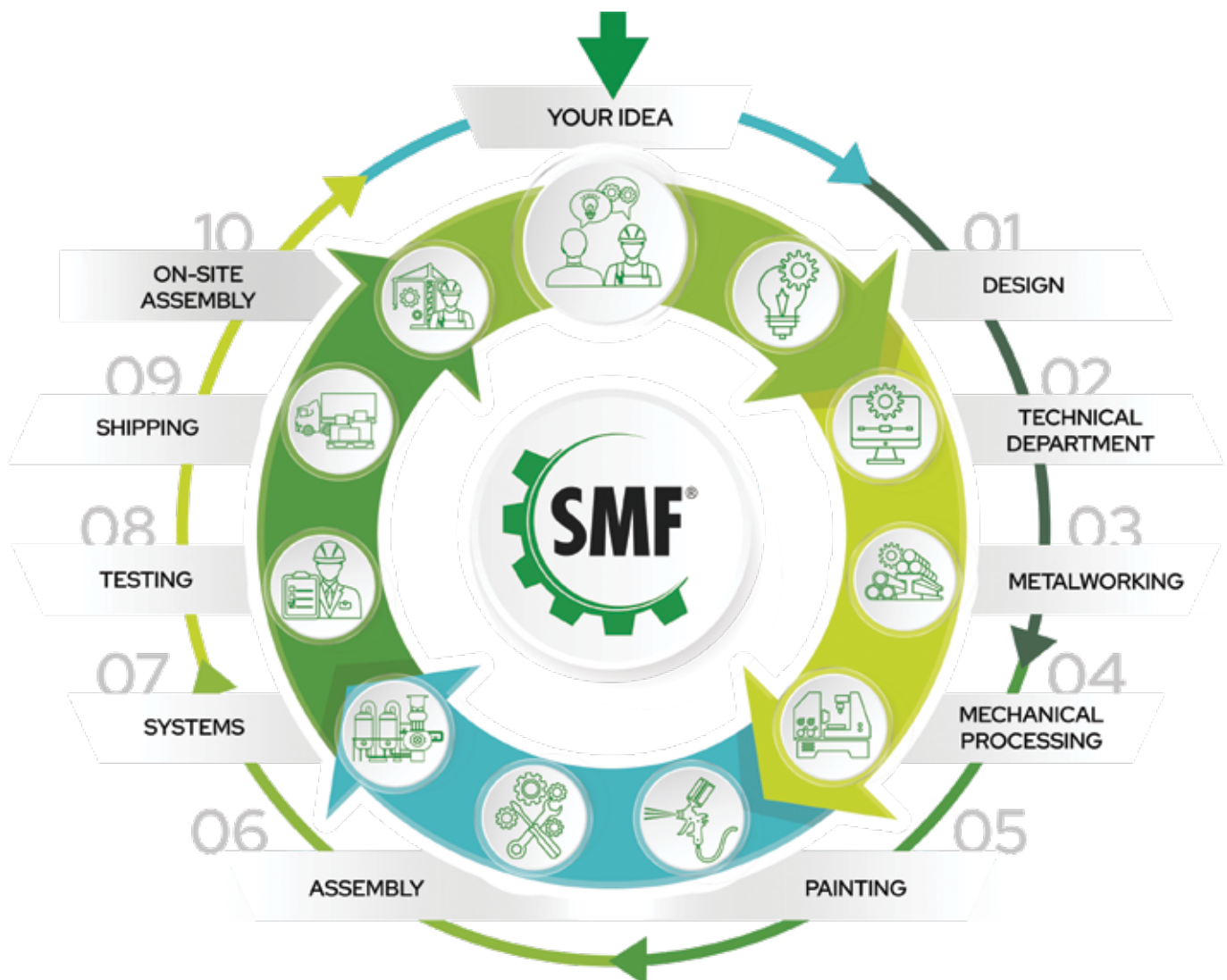
# SKILLS

We currently have around 250 designed plants, built, installed and certified by us.  
The company has:

- SMF3: Steel Carpentry;
- SMF1: CNC machining and painting;
- SMF2: Assembly, testing and shipping;

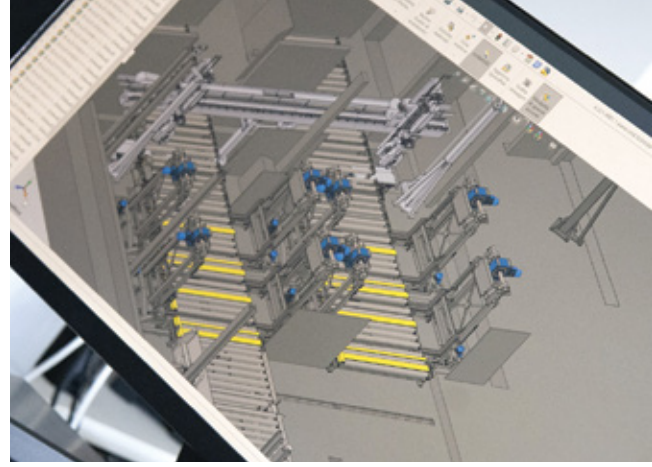
The experience gained over the years in various sectors, skills and technology allow us to offer our customers turnkey solutions.

SMF, born and bred under the entrepreneurial management typical of the area, is equipped with an **autonomous engineering and manufacturing supply chain** to guarantee all the process phases of the job order, from the customer's request to the testing of the supply.





## DESIGN



The technical analysis begins with the **elaboration of basic engineering** to verify the relative feasibility and investment estimate of the request.

Subsequently, **detailed mechanical, electrical and automation design for process control** is carried out to formulate the project in its total dimensional and performance completeness.

The technical department is structured to design and produce the relevant drawings according to international standards such as **UNI, EN, ANSI, DIN, NEMA**.

To make the best use of the CAD system and make the work of the technical office as productive as possible, it is **important to input as much information as possible** to reduce time and errors.



The **SMF3 department** was built to **produce medium/heavy steel carpentry** and is equipped with:

- 9000 sqm area with 1800 sqm covered on two halls and 38,000 internal man-hours available per year;
- One (1) 20 t overhead cranes
- Two (2) 10 t overhead cranes and one (1) 5 t overhead crane;
- One (1) semi-automatic jigsaw;
- Twelve (12) water-cooled welding machine;
- Three (3) milling benches for carpentry;

The carpentry phase is characterized by **great precision**, indispensable for the **creation and assembly of each component**. This is a machining phase that we follow with great care because everything needed to make machinery starts with the steel carpentry, i.e., the machining of the small elements.

## CARPENTRY



# MACHINING



The **SMF1 department** was built for machine tool machining and painting and is equipped with:

- 6,000 sqm area with 3,000 sqm covered;
- 50,000 internal man-hours available per year;
- 20 t and 10 t overhead cranes;
- One (1) 8400x8400 mm pit 3000 mm deep;
- Twelve (12) CNC milling, boring and conventional lathes;
- One (1) painting plant equipped with vacuum application booths and a baking oven, built in compliance with environmental protection regulations.

Mechanical processes such as casting, forging, rolling, stamping, EDM, extrusion, cold working with chip export and sintering are carried out.



The **SMF2 department** was set up for the assembly of equipment and the execution of on-board plants and is equipped with:

- 5500 sqm area with 2500 sqm covered;
- 70,000 internal man-hours available per year;
- 50 t, 20 t and 10 t overhead cranes;
- One (1) 11550x8620 mm pit 4000 mm deep;

We carry out dimensional checks on mechanical components with great care to assess the conformity of the product to the specifications of the construction drawing. We also have an "expediting" service to systematically check external supplies and at the same time classify suppliers. During our growth, we have acquired EN ISO 3834 certification recently implemented with EN1090.

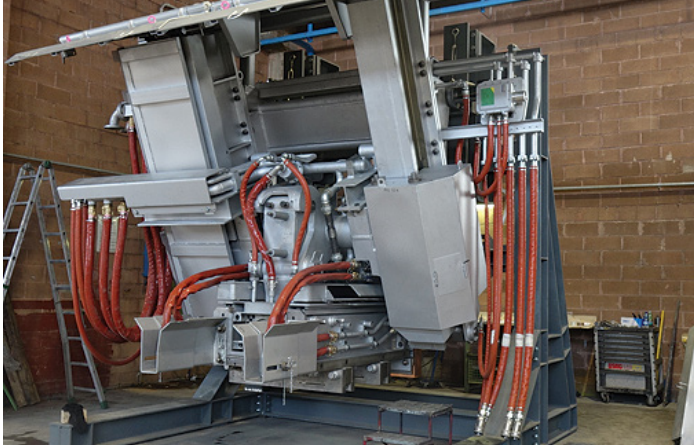
# ASSEMBLY







# PRODUCT AND SERVICES



## MELT SHOP

Tundish wagons, ladle wagons, oscillating benches, continuous casters, false bars, draggers, straighteners, cooling plates, loading/unloading benches

## ROLLING MILLS

Stands, shears, pinch rolls, straighteners, roller tables, cooling beds, transfers, bar and coil finishing services

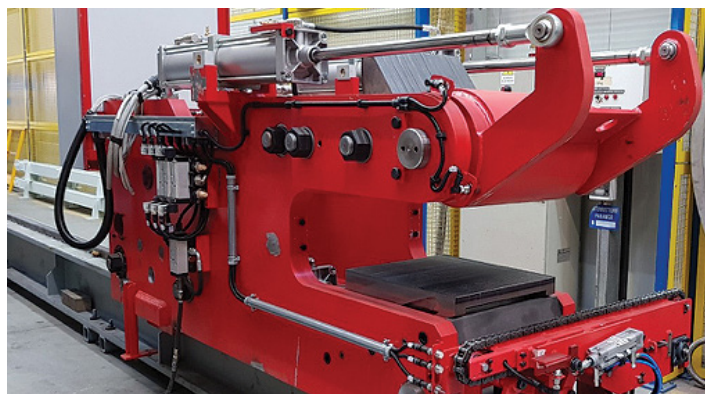


## FURNACES

Loading/unloading machines close to reheating furnaces/forging furnaces and treatment furnaces in general

## NO-FERROUS

Automatic loaders for melting furnaces, single machines and turnkey plants for both upstream and downstream extrusion presses



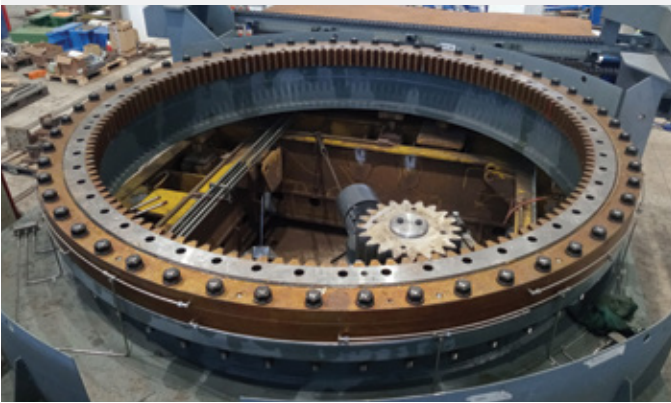


# PLANT / EQUIPMENT UPGRADING

So-called revamping is a **regenerative intervention** on existing machinery and production lines to **regain their functionality**.

This operation involves **restructuring and refurbishing the machinery/plants** by making technological, plant and structural changes as required to extend their life cycle and **restore their full functionality as per the initial design**.

**Modern technology will replace obsolete technology**, allowing the plant to increase its performance, reduce costs, save energy and increase safety.



# ON-SITE SERVICES

Following the assembly and testing phase at our workshops, **SMF provides the installation service at the end customer's site** with specialized personnel managed by the same supervisors who followed the on-site assembly.

This will ensure the **functionality and performance of the equipment supplied**. In addition to the installation activity, SMF also firmly believes in the maintenance aspect of the systems, starting with a systematic approach to the method, which is also linked to continuous on-the-job training.

**SMF have own vehicles** such as crane trucks and tractor-trailers that allow us maximum operational flexibility.





## EXTRUSION

NO FERROUS DIVISION

40% of SMF Group production is dedicated to technologies with own know-how. A significant part of this volume concerns the engineering, production and commissioning of equipment and plants for the production of extruded aluminum bars.

Particular attention is paid to designing "green" technological solutions that respect present and future environmental and energy needs.

Some of the most significant references are the lines and machines supplied to **ESTRAL** (Italy), **INDALUM** (Mexico), **MV Extrusion** (Italy), **NIELSEN** (Germany) in partnership with major technology suppliers.

Via G. A. M. Rollet n. 3 - Z.I. 33034 Fagagna (UD)

Phone: +39 351 7072765

E-mail: [extrusion@smf.it](mailto:extrusion@smf.it)

[www.smf.it](http://www.smf.it)







The Group philosophy, since 1984, is to **serving customers with quality and service**, offering intellectual skills and qualified manpower, state-of-the-art equipment and, above all, operational flexibility to minimize intervention times and guarantee a satisfactory response to the timing of the various projects requested by customers.

In 2023 the “SMF Finishing Lines” subsidiary was born, **dedicated to 7/24 support to manufacturers of flat products for revamping, accidental stops, fast tracks and spare parts.**

Furthermore, SMF FL offers, designs, builds, installs and certifies technologically advanced continuous cycle systems for the surface treatment and processing of flat rolled products in ferrous and non-ferrous metals, such as LCC liquid coil coating line, PCC Spiral Powder Coating Line and Digital print for new and existing plants.

Corso del Popolo, 26 - Terni (TR) 05100 - Italy

Phone: + 39 0744 091440

E-mail: [info@smffinishinglines.it](mailto:info@smffinishinglines.it)

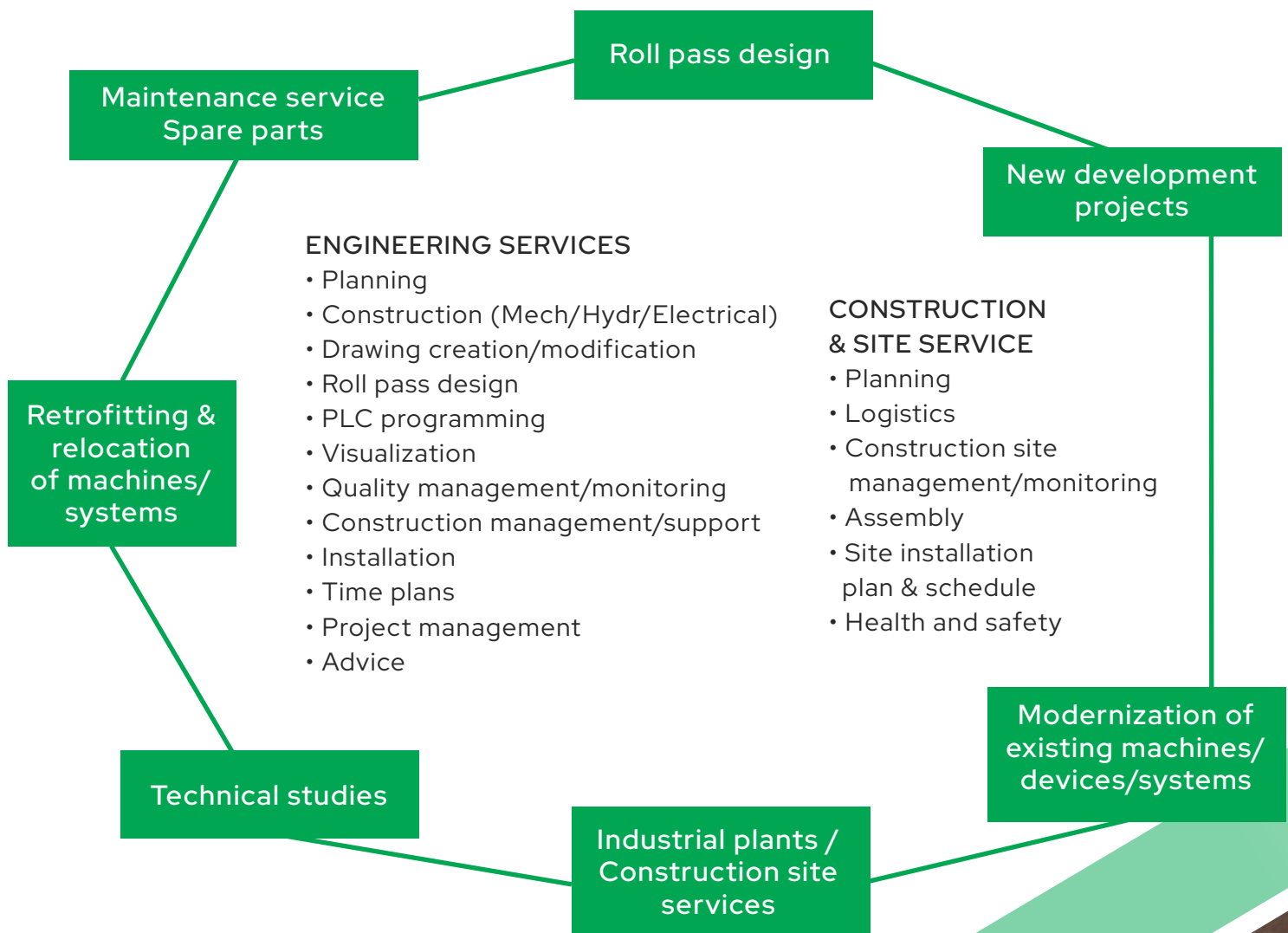
[www.smffinishinglines.it](http://www.smffinishinglines.it)





In 2024 we took the opportunity to create the MFK company through collaboration with KOHE, a German company with deep knowledge in the steel and rolling mill sector for special long products.

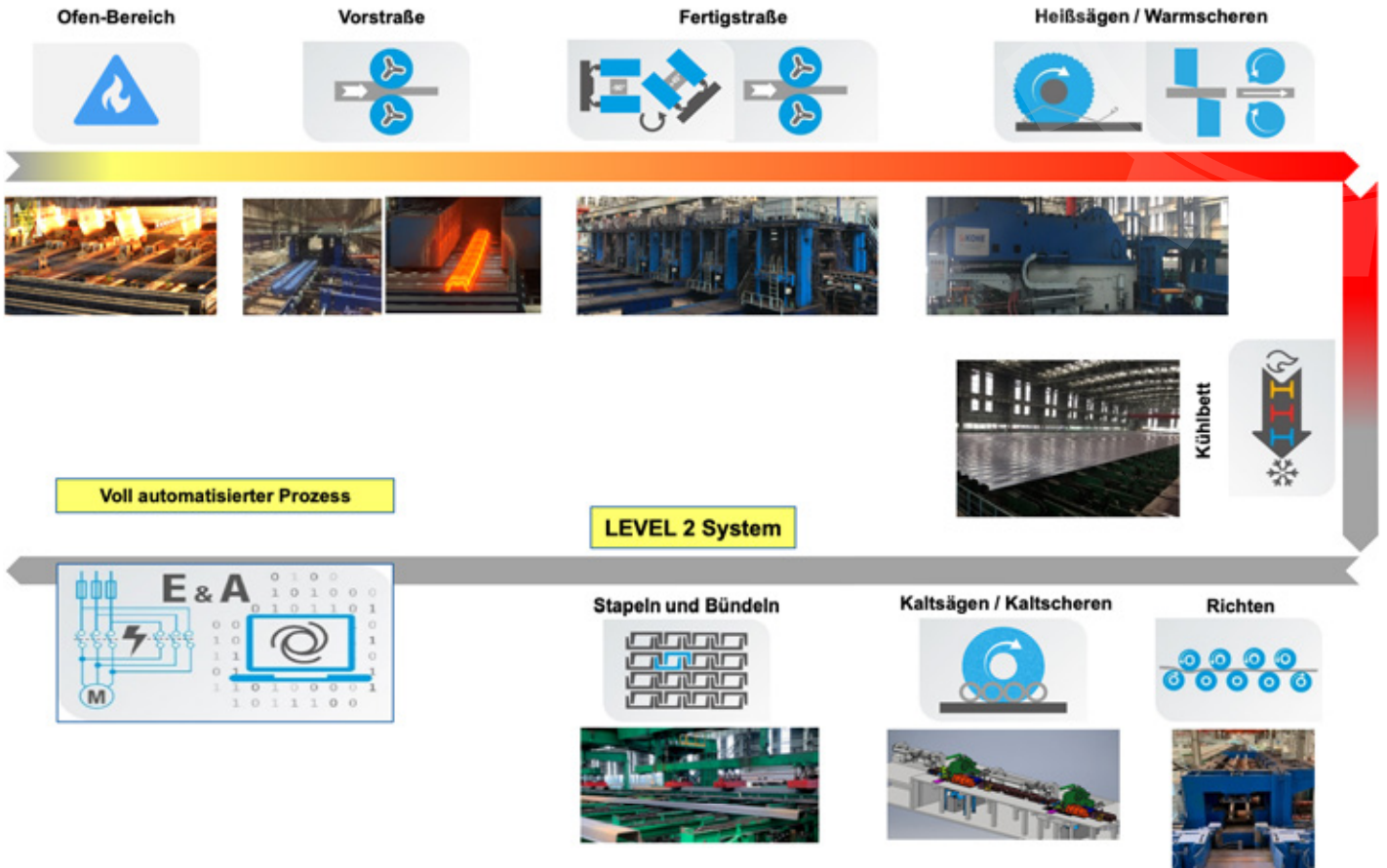
The aim is to provide comprehensive project services with tailor-made solutions for new construction or modernization/relocation of plants and machines in the international metallurgical, steel and rolling industries, including planning, design, production, delivery, assembly and commissioning, as well as after-sales service.





# APPLICATION METHOD

## HEAVY PROFILE PLANT FOR SHEET PILE WALLS



Brückenstraße 60 - 66763 Dillingen - Deutschland

E-mail: [info@mfk-tech.de](mailto:info@mfk-tech.de)

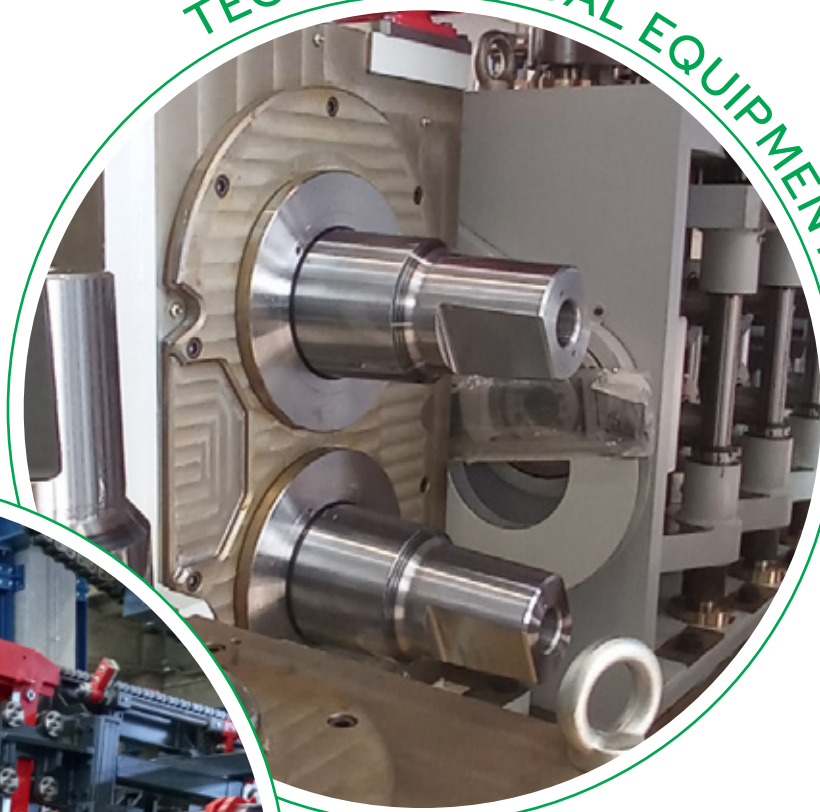
Phone: +49 (0)6831 - 6878553

[www.mfk-tech.de](http://www.mfk-tech.de)



# EQUIPMENT REFERENCES

TECHNOLOGICAL EQUIPMENT



AUXILIARY EQUIPMENT



SPECIAL EQUIPMENT





# REFERENCE CUSTOMERS





Via G. A. M. Rollet n. 3  
Z.I. 33034 Fagagna (UD)  
Phone: +39 0432 810429  
Fax: +39 0432 810430  
E-mail: [info@smf.it](mailto:info@smf.it)

[www.smf.it](http://www.smf.it)

