

SMF Finishing Lines S.r.l.

POWDER COATING FOR STEEL OR ALUMINUM SHEETS OR COILS FOR CONSTRUCTION, ARCHITECTURE AND INDUSTRY

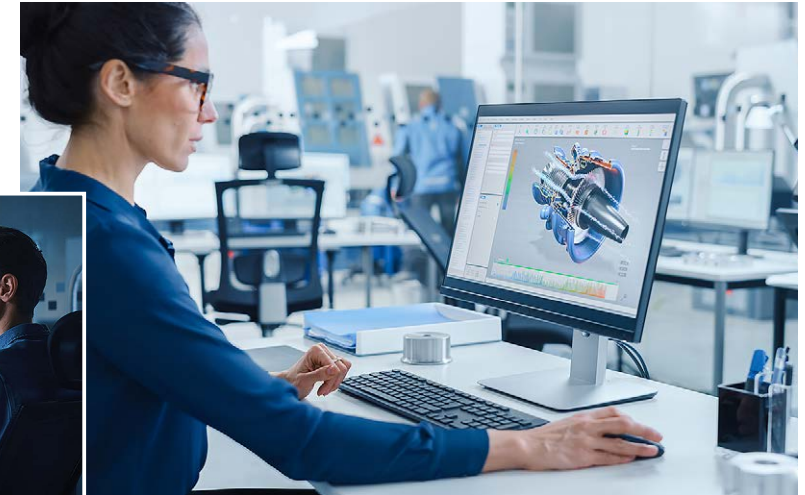




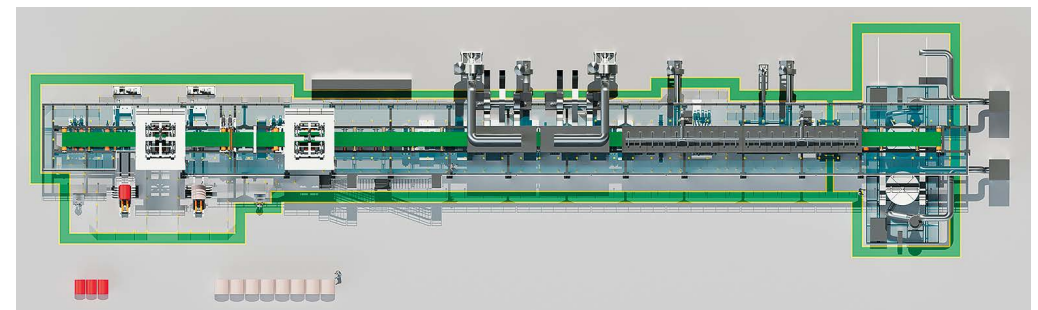
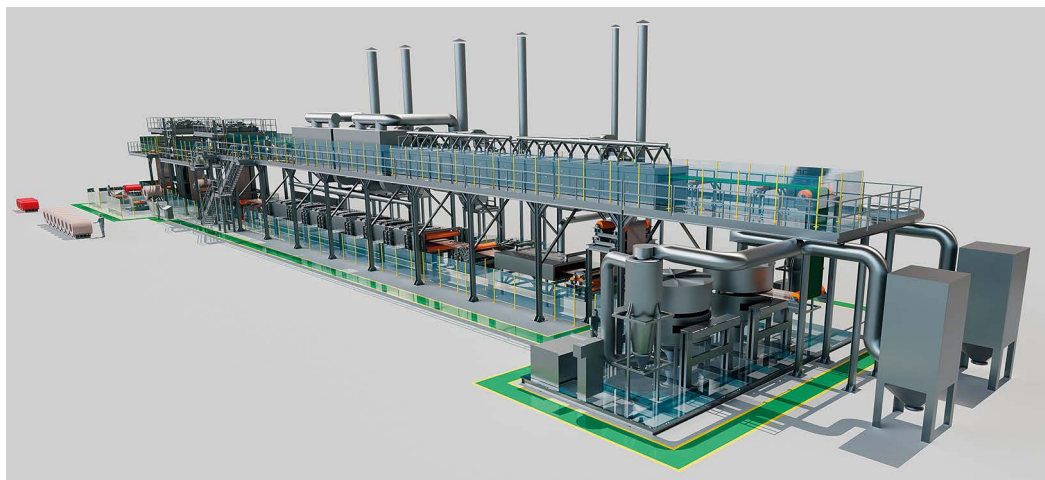
SMF FINISHING LINES DESIGNS, MANUFACTURES, INSTALLS AND CERTIFIES COMPLETE PLANTS IN THE SECTOR OF CONTINUOUS PAINTING OF METALLIC, FERROUS AND NON-FERROUS COILS.

The range of systems proposed is complete and innovative, exploits a wealth of skills and experience gained in over 30 years of activity in the specific sector and finds its strengths in safety, in the quality of the technological process applied, in the quality of the finished product, in reliability, sustainability and energy saving constantly researched and developed.

SMF Finishing Lines offers an effective partner for a "turn-key" supply, taking care directly of all the production cycle phases from installation, to commissioning, assistance with training of customer technicians, maintenance and spare parts service. The plants supplied by SMF Finishing Lines are "CE" certified, and in any case according to the active regulations in the country of installation.



With a team of highly specialized and qualified engineers and technicians and thanks to the matured and consolidated technological know-how in the specific sector, **SMF Finishing Lines** is able to satisfy the needs of customers by accompanying them on a path of innovation capable of guaranteeing them a constant evolution and adaptation of the production process to market needs.



SMF Finishing Lines develops the projects of its plants using latest generation workstations complete with 3D design software suitable to cover the full design process.



Powder coating plant cod. **FL01PW_24**.

It is composed of a series of technological areas: entry area, degreasing and cleaning area for the surface preparation of the strip, powder paint application area, paint polymerization and strip cooling area and exit area. The mentioned areas identify the plant lay-out.

In general, the line is based on a controlled drive system, on a process system and on an electro-instrumental architecture necessary for the continuous management of the automation of the plant.

The strip driving system includes:

- Groups for coil loading and unloading;
- Groups for strip decoiling and recoiling;
- Groups for strip centering;
- Groups for strip end cutting and junction;
- Groups of strip tensioning bridle;
- Groups of strip accumulation;
- Groups for spools inserion;
- Groups for plastic film application.





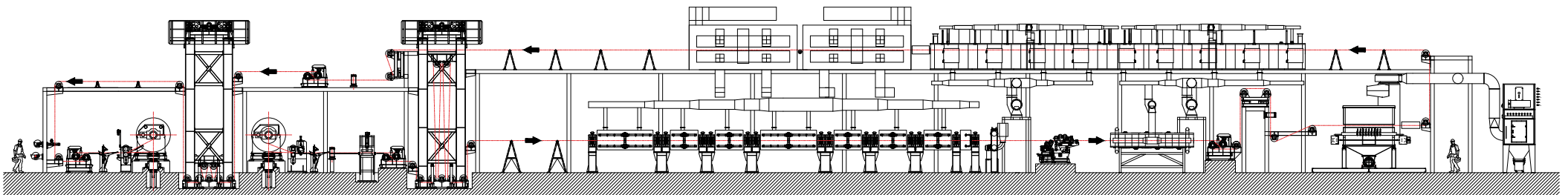
The process system includes:

- Strip surface cleaning unit, generally by spray, with relative drying;
- Immersion, spray, roller or "soft rain" strip conversion unit with relative drying;
- Groups of application, normally, by electrostatic system of the painting powders on the "top" face of the strip;
- Polymerization group, normally, by infrared irradiation;
- Cooling unit, generally, with forced air.





SMF Finishing Lines, based on the needs of customers, provides a series of "additional technological packages" suitable for optimizing and achieving the production needs and performances of the requested plant.

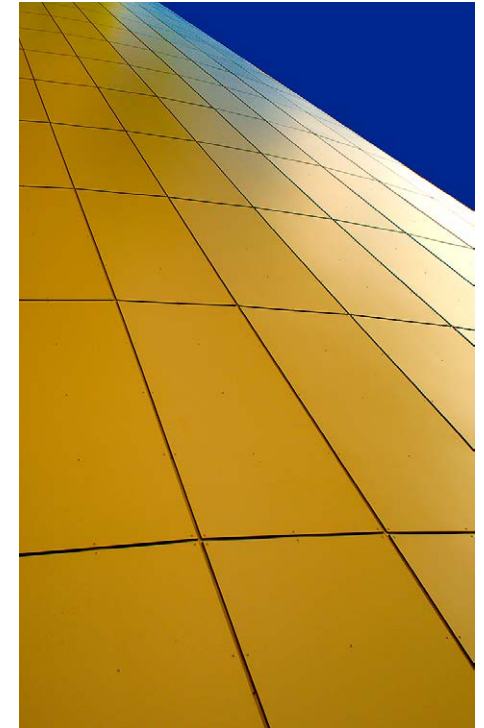




Technological process used for the continuous painting of flat metallic, ferrous and non-ferrous strips. Use solvent-free powder paints. The finished pre-painted product, guarantees adequate preparation for following process of blanking, bending, moulding and profiling.

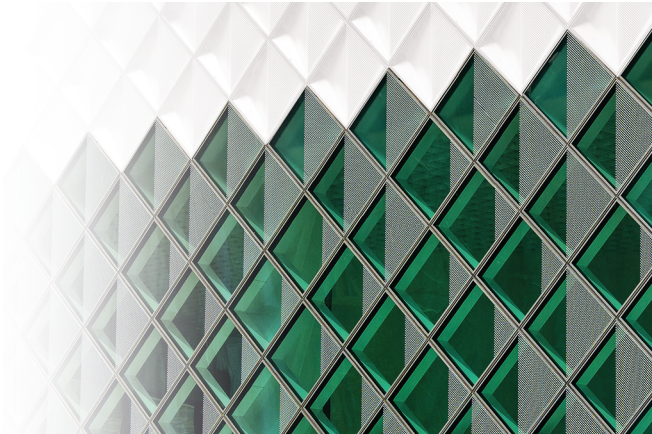
The main fields of application are:

- window and door complements;
- false ceilings;
- continuous building facades;
- appliance industry;
- transport industry;
- serigraphy.



Paints with different characteristics can be applied, such as:

- ◆ Polyester;
- ◆ Super-polyester;
- ◆ Polyurethanes.





SMF Finishing Lines offers at the Customers a multidisciplinary assembly service, suitable for ensuring the complete installation of the plants supplied, acting as a single interface for coordination and management of all plant engineering, technical, technological, organizational and programming.

The teams employed are made up of highly specialized and qualified technicians with gained experience in a specific field. The latest generation equipment is used to ensure maximum reliability and quality of field work.

SMF Finishing Lines, with its teams, operates nationally and internationally.





part of SMF GROUP



SMF Finishing Lines S.r.l.

Corso del Popolo, 26 - 05100 Terni (TR) - Italy

Tel. + 39 0744 091440

E-mail: info@smffinishinglines.it - Web: www.smf.it

